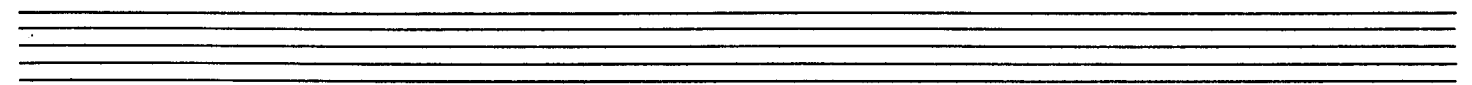
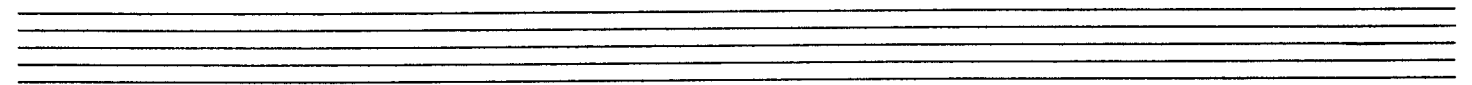
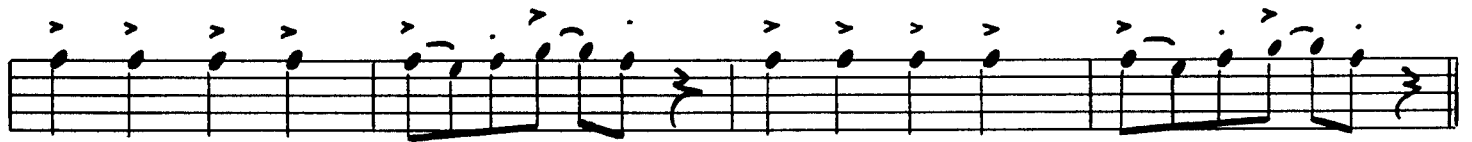


ALTO SAX

BLUES BROS. THEME



8



TENOR SAX

BLUES BROS. THEME

8

9

17



BARITONE SAX

BLUES BROS. THEME

Musical staff with treble clef, key signature of one sharp (F#), and 4/2 time signature. A circled '9' is written above the staff. A repeat sign with the number '8' inside is placed on the staff.

Musical staff with a circled '9' above the first measure. The staff contains a sequence of notes with accents and slurs, ending with a fermata.

Musical staff with a circled '17' above the 17th measure. The staff contains a sequence of notes with accents and slurs, ending with a fermata.

Musical staff with a sequence of notes, including rests, with accents and slurs.

Musical staff with a sequence of notes, including rests, with accents and slurs.

Musical staff with a sequence of notes, including rests, with accents and slurs, ending with a double bar line.

Empty musical staff.

Empty musical staff.

Empty musical staff.

TRUMPET 1+2

BLUES BROS. THEME

Handwritten musical notation for the beginning of the piece, including a treble clef, a key signature of one flat (Bb), a 4/2 time signature, and a repeat sign with the number 8.

Musical notation for measures 9 through 16. Measure 9 is circled. The notation includes a melodic line with eighth notes and a bass line with chords and eighth notes.

Musical notation for measures 17 through 24. Measure 17 is circled. The notation includes a melodic line with eighth notes and a bass line with chords and eighth notes.

Empty musical staff.

Empty musical staff.

Empty musical staff.

3RD TRUMPET

BLUES BROS. THEME

Handwritten musical notation on a single staff, including a treble clef, a key signature of one sharp (F#), a 4/4 time signature, and a measure rest marked with the number 8.

Musical staff starting with a circled measure number 9. The notation includes eighth notes with accents, a sharp sign (#) on the second staff line, and slurs over groups of notes.

Musical staff continuing the melody with eighth notes, accents, and slurs.

Musical staff starting with a circled measure number 17. The notation includes quarter notes, eighth notes, and slurs.

Musical staff continuing the melody with quarter notes, eighth notes, and slurs.

Musical staff continuing the melody with eighth notes, quarter notes, and slurs, ending with a double bar line.

Empty musical staff.

Empty musical staff.

Empty musical staff.

TROMBONE 1+2
BARITONE

BLUES BROS. THEME

9:45 4/4 = 8 =

9

17

BASS TROMBONE

BLUES BROS. THEME

Musical staff with treble clef, key signature of one flat (B-flat), and a circled '8' indicating a measure rest.

⑨

Musical staff with a circled '9' and a circled '4' indicating measure rests.

Musical staff with a circled '17' indicating a measure rest.

Musical staff with notes and rests.

Musical staff with notes and rests.

Musical staff with notes and rests.

Empty musical staff.

Empty musical staff.

Empty musical staff.

TROMBONE 1+2
BARITONE

BLUES BROS. THEME

9:45 4/4 = 8 =

9

17

ORGAN

BLUES BROS. THEME

(L.H. - 8vb)

9 (+ R.H. - Loco)

17

GUITAR

BLUES BROS. THEME

Handwritten guitar notation for the first two lines of the Blues Bros. Theme. The first line starts with a treble clef, a key signature of one flat (Bb), and a 4/4 time signature. The music consists of eighth-note patterns with accents and slurs. The second line continues the pattern and ends with a double bar line.

9 (BRASS CUE:)

Handwritten guitar notation for the third and fourth lines, labeled "9 (BRASS CUE:)" in a circled box. The notation continues with eighth-note patterns and includes a circled "9" at the start of the first line.

10

Handwritten guitar notation for the fifth, sixth, and seventh lines, labeled "10" in a circled box. The notation continues with eighth-note patterns and includes a circled "10" at the start of the first line.

Two sets of empty five-line musical staves at the bottom of the page.

BASS

BLUES BROS. THEME

9

(BRASS CUE:)

17



DRUMS

BLUES BROS. THEME

(HI-HAT - TIME)

(7)

(FILL)

(9) (HORNS IN)

(8)

(17)

(HI-HAT)

(7)

BLUES BROS. THEME

Musical score for the first system of the Blues Bros. Theme. It consists of two staves: Horns and RHY. The Horns staff is in 4/4 time and contains a melodic line with a circled '9' above the first measure. The RHY. staff is in 4/4 time and contains a rhythmic accompaniment with a circled '9' above the first measure. Both staves have a double bar line at the end of the system.

HORNS

RHY.

Musical score for the second system of the Blues Bros. Theme. It consists of two staves: Horns and RHY. The Horns staff is in 4/4 time and contains a melodic line with a circled '9' above the first measure. The RHY. staff is in 4/4 time and contains a rhythmic accompaniment with a circled '9' above the first measure. Both staves have a double bar line at the end of the system.

HORNS

RHY.

17

Horns

RHY.

Horns

RHY.